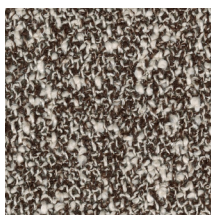


FABRIC COLLECTION

PRICE GROUP 3



ZERO

The influence of Parisian couture clothing can be seen in this elegant and irregular bouclé upholstery textile. The pearl effect yarn is used in both warp and weft giving a luxurious handle and a sophisticated appearance. The sixteen colourways range from tonal through to contrasting 'salt and pepper' combinations.

RESIDENTIAL & CONTRACT USE / 16 COLOURS / WWW.SAHCO.COM



NIMBUS

A soft wool bouclé fabric reminiscent of puffy clouds. An uneven surface and textural richness are the distinctive features of this fabric. The delicate colour palette, including natural tones and darker shades, enhances the intrinsic nature of wool.

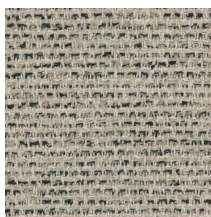
RESIDENTIAL USE / 8 COLOURS / WWW.DEDAR.COM



MOSS

The second design by Vincent van Duysen and Anna Vilhelmine Ebbesen is the distinctive upholstery fabric Moss. The mixture of twisted yarn and chenille gives the fabric surface a textured structure with an appearance of movement, and also creates a soft handle which adds a special dimension to the furniture it covers. The twenty-two colourways are either one- or two-tone combinations inspired by Vincent van Duysen's own home and range from cool cement and soft blue to oily green, curry yellow and the shades of natural wood.

RESIDENTIAL & CONTRACT USE / 22 COLOURS / WWW.SAHCO.COM



SAVANNA

Savanna combine different types of yarns and materials to offer distinctive depth and richness, created by acclaimed Danish designers, Aggebo & Henriksen. The designers blended yarns with contrasting characters to give the fabric elegant, sophisticated and individual structures: both textiles fuse shiny yarns, matt yarns and bouclé yarns. As a result, they each feature a rich, irregular surface, which reveals an eye-catching play of details when seen from close up.

RESIDENTIAL USE / 12 COLOURS / WWW.KVADRAT.COM



ECRITURE

A matt melange bouclé with an elegant sheen, Ecriture upholsters beautifully with an organic rich texture and a cosy comfortable feel. Made with a dobby loom, the fabric combines shiny, matt and chenille yarns to create a surface reminiscent of grains of rice with speckles from the shiny warp yarn. The colours are influenced by ceramic glazes, ranging from powdery rose pink, silver blue and lemon grass to chalky rice, stone grey, oyster grey, ivory and snow white.

RESIDENTIAL & CONTRACT USE / 20 COLOURS / WWW.KVADRAT.COM



MARABOU

A chenille evokes the comfort of leisurewear and the full hand of a velvet. Marabou unites the softness of the chenille yarn, used in its warp and weft, with functionality, to make its nonchalant and confident debut in all residential and public interiors. Hardwearing, fire-retardant, washable, and available in a complete range of vibrant colours, it is a precious tool with the addition of the possibility to personalize colour.

RESIDENTIAL & CONTRACT USE / 25 COLOURS / WWW.DEDAR.COM



KARAKORUM

KARAKORUM is a bouclé wool and viscose fabric, inspired by precious Astrakhan fur. Comfortable and bulky with a soft hand-feel. Textured and soft to the touch, bouclé fabrics combines strength with a comfortable hand-feel. From the natural fibres of wool, the collection enhances the spontaneity typical of craftsmanship, in which irregularity is a vital element of the fabric's preciousness.

RESIDENTIAL USE / 8 COLOURS / WWW.DEDAR.COM



VIDAR 4

Originally designed by Fanny Aronsen, Vidar has been re-coloured by Raf Simons, with shades ranging from moss green, dark aubergine, ruby red and midnight blue through to brick and earth tones, and easy neutrals. The gentle satin surface finish of the weave contrasts with the deep shadowy tones in the depths, giving a multi-faceted richness to the intense colours in the range. Tightly woven, without the irregularities of the other bouclé fabrics within this collection, Vidar has an inviting texture, which variously recalls blackberries, orange peel or the comforting close-knit texture of a favourite sweater.

RESIDENTIAL & CONTRACT USE / 41 COLOURS / WWW.KVADRAT.COM