



GAZZDA

---

# Nora seating

## Product sheet

design by  
**Mustafa Čohadžić**



**BIGSEE  
PRODUCT DESIGN  
AWARD 2019  
WINNER**

# Nora seating

## Product facts

### Materials

---

Body	Solid oak
Backrest	Oak veneer
Finish	Hardwax oil / lacquered
Seat	Oak veneer / leather or fabric upholstery

### Technical features

---

#### Body

Nora's body is made out of solid wood, while the bent backrest is made out of thin veneer slices of high-quality oak. Chair elements are connected with characteristic and visible wedged mortise and tenon joints. Plastic gliders are attached to the chair legs and are suitable for most flooring options. The seat is connected to the body through black seat spacers, while the backrest is attached to the chair legs with black powder-coated spacers.

#### Seat

Three material options for a seat are available: as a form-pressed veneer seat or as leather or fabric upholstered options. For further information please see Available materials page in this document.

#### Finish

Available in three plant-based Hardwax oil finishes (colors), which retain the wood's natural state (white, natural and smoked oil) or as a black lacquered option.

#### Cleaning

Please see [Product](#) or [Material](#) page on our website.

### Standards and certifications

---

Nora Chair, Nora Lounge Chair and Nora Bar Chair fulfil requirements of standard BAS EN 16139:2014 + BAS EN 16139/Cor1:2014 Furniture - Strength, durability and safety - Requirement for non-domestic seating.

### Notes to consider

---

#### Variations

Natural variations in wood color and surface may occur. Regular maintenance will ensure the wood preserves its authentic beauty and can last for generations.

#### Product changes

Please note that Gazzda reserves the right to alter construction and design without notice.

#### Dimensions (tolerances)

The dimensions shown are indicative, they may vary due to the natural properties of wood, season, or manufacturing processes. Deviations from the specified size may occur, usually no more than 1 cm.

For all additional inquiries regarding Nora seating products please feel free to [contact us](#).

# Nora Chair

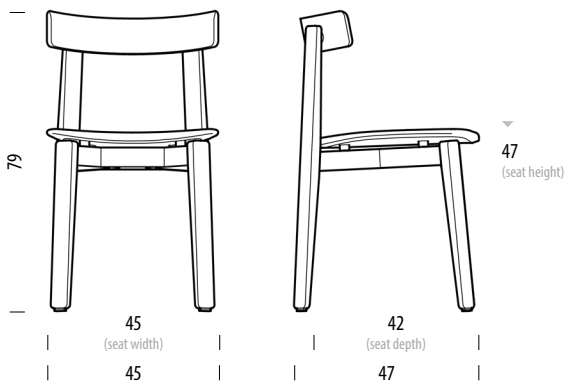
Base Solid Oak, Backrest Oak veneer, Seat Upholstered / Oak veneer



Version: 6-2-2024

## Basic info

<b>Design</b>	Mustafa Čohadžić
<b>Product size</b>	W: 45, D: 47, H: 79
<b>Packaging</b>	W: 51,5, D: 66,5, H: 103
<b>Volume</b>	0,35 m <sup>3</sup>
<b>Net weight</b>	5,9 kg
<b>Gross weight</b>	14,2 kg (2 pcs per packaging)



Item no. 0FF / 1D1

Assembled product

Dimensions	Width	Depth	Height
Seat	45	42	47

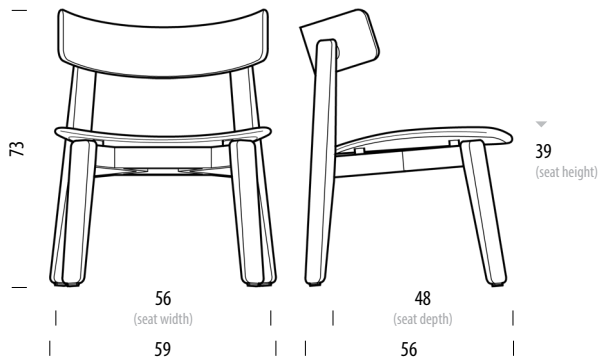
# Nora Lounge Chair

Base Solid oak, Backrest Oak veneer, Seat Upholstered / Oak veneer

Version: 6-2-2024

## Basic info

<b>Design</b>	Mustafa Čohadžić
<b>Product size</b>	W: 59, D: 56, H: 73
<b>Packaging</b>	W: 66, D: 60,5, H: 78
<b>Volume</b>	0,31 m <sup>3</sup>
<b>Net weight</b>	7,2 kg
<b>Gross weight</b>	10,3 kg



## Item no. 184 / 1D2

Assembled product

Dimensions	Width	Depth	Height
Seat	56	48	39

# Nora Lounge Chair Upholstered Backrest

Base **Solid oak**, Seat / backrest **Upholstered**

## Basic info

**Design** Mustafa Čohadžić

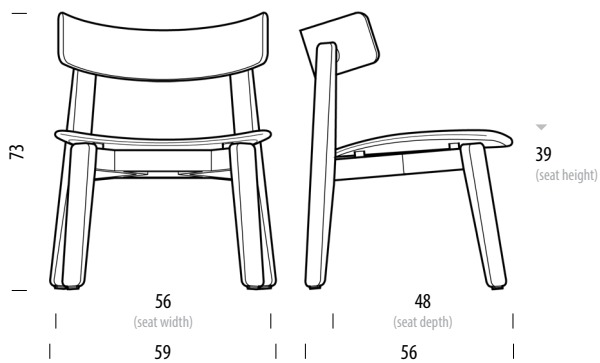
**Product size** W: 59, D: 56, H: 73

**Packaging** W: 66, D: 60,5, H: 78

**Volume** 0,31 m<sup>3</sup>

**Net weight** 8 kg

**Gross weight** 11,1 kg



### Item no. 1D3

Assembled product

Dimensions	Width	Depth	Height
Seat	56	48	39

# Nora Bar Chair

Base Solid Oak, Backrest Oak veneer, Seat Upholstered / Oak veneer

Version: 6-2-2024

## Basic info

**Design** Mustafa Čohadžić

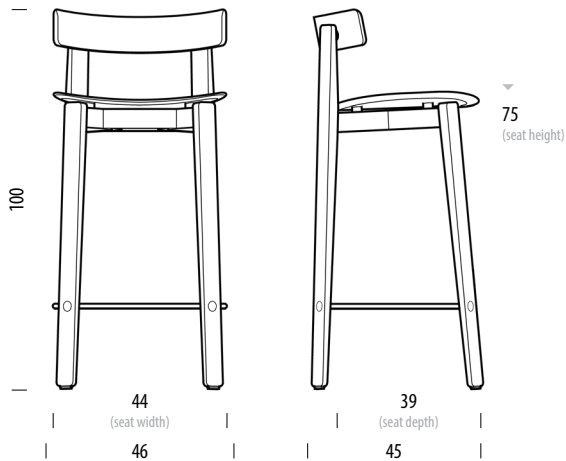
**Product size** W: 46, D: 45, H: 100

**Packaging** W: 52, D: 47, H: 106

**Volume** 0,26 m<sup>3</sup>

**Net weight** 7,7 kg

**Gross weight** 10,1 kg



Item no. 185 / 1CE

Assembled product

Dimensions	Width	Depth	Height
Seat	44	39	75

# Nora Bar Stool

Base Solid oak, Seat Upholstered / Oak veneer

Version: 6-2-2024

## Basic info

**Design** Mustafa Čohadžić

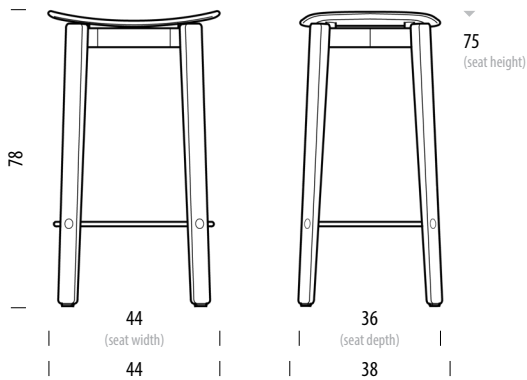
**Product size** W: 46, D: 45, H: 100

**Packaging** W: 52, D: 47, H: 106

**Volume** 0,26 m<sup>3</sup>

**Net weight** 7,7 kg

**Gross weight** 10,1 kg



## Item no. 187 / 1D0

Assembled product

Dimensions	Width	Depth	Height
Seat	44	36	75

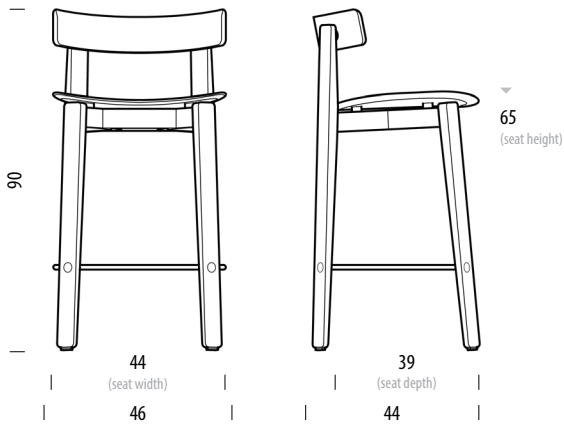
# Nora Counter Chair

Base Solid Oak, Backrest Oak veneer, Seat Upholstered / Oak veneer

Version: 6-2-2024

## Basic info

<b>Design</b>	Mustafa Čohadžić
<b>Product size</b>	W: 46, D: 44, H: 90
<b>Packaging</b>	W: 52, D: 47, H: 106
<b>Volume</b>	0,26 m <sup>3</sup>
<b>Net weight</b>	7,2 kg
<b>Gross weight</b>	9,6 kg



### Item no. 186 / 1CD

Assembled product

Dimensions	Width	Depth	Height
Seat	44	39	65



# Nora Counter Stool

Base Solid oak, Seat Upholstered / Oak veneer

Version: 6-2-2024

## Basic info

**Design** Mustafa Čohadžić

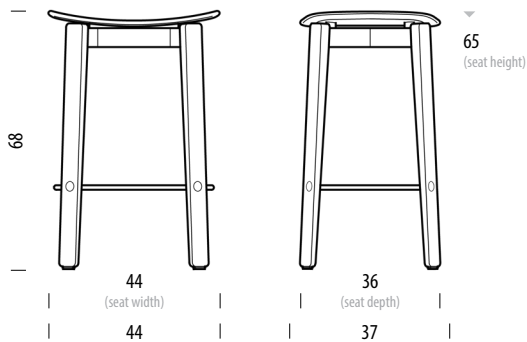
**Product size** W: 44, D: 37, H: 68

**Packaging** W: 51, D: 49, H: 89

**Volume** 0,22 m<sup>3</sup>

**Net weight** 5,7 kg

**Gross weight** 8,1 kg



## Item no. 188 / 1CF

Assembled product

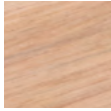
Dimensions	Width	Depth	Height
Seat	44	36	65

# Nora seating

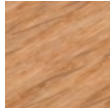
## Available materials

Version: 6-2-2024

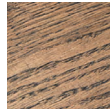
### Base, seat and backrest | Oak



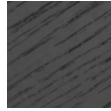
Oiled  
1015  
White oil



Oiled  
1505  
Natural oil



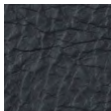
Oiled  
163  
Smoked oil



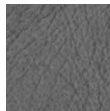
Lacquered  
RAL 9005  
Black

### Upholstered seat | Leather

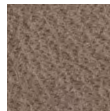
#### Dakar - by Leder Reinhard



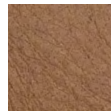
0500  
Black



1258  
Grey



1436  
Stone

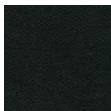


3411  
Nature

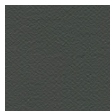


2732  
Whisky

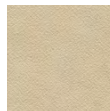
#### Deca vegan leather - by Camira



DEC20  
Downing



DEC05  
Decimal



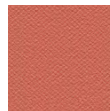
DEC03  
Digit



DEC07  
Decapod



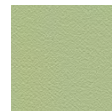
DEC14  
Fortune



DEC09  
Tien



DEC11  
Richter



DEC15  
Catenia

### Upholstered seat | Fabric

#### Main line flax - by Camira



MLF16  
Temple



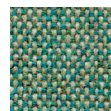
MLF20  
Upminster



MLF02  
Archway



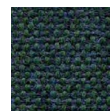
MLF10  
Newbury



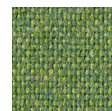
MLF24  
Bayswater



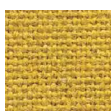
MLF22  
Westminster



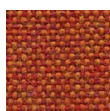
MLF32  
Greenford



MLF18  
Tufnell



MLF17  
Tooting



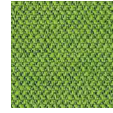
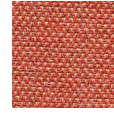
MLF13  
Leyton

# Nora seating

## Available materials

Version: 6-2-2024

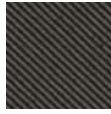
## Era - by Camira

CSE14  
ForwardCSE13  
PresentCSE45  
PromptCSE42  
RangeCSE20  
AeonCSE16  
TimelapseCSE26  
TurnCSE03  
Lifetime

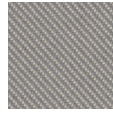
## Relate - by Kvadrat



0171



0181



0111



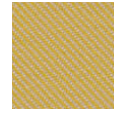
0771



0961



0671

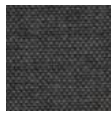


0431

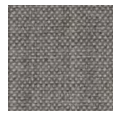
## Remix - by Kvadrat



0753



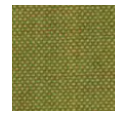
0163



0123



0823



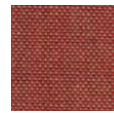
0912



0933



0612

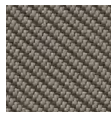
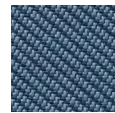
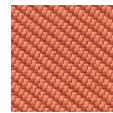
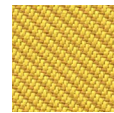


0632

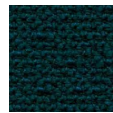
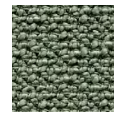
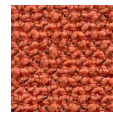
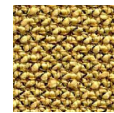


0762

## Oceanic - by Camira

OOC01  
FlotsamOOC08  
BayOOC14  
RiptideOOC13  
PaddleOOC11  
NeptuneOOC05  
CoralOOC07  
Barrier

## Yoredale - by Camira

UDA08  
GayleUDA25  
LeyburnUDA17  
RibbleUDA04  
HardrawUDA02  
KidstoneUDA03  
AskriggUDA05  
Simonstone

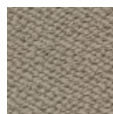
## Vidar - by Kvadrat



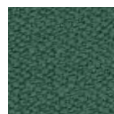
0182



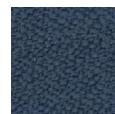
0133



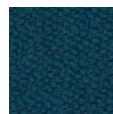
0222



0943



0733



0872



0582



0472