

Grand Bench

Designed by Emil Thorup



Description

The Grand Bench makes a versatile addition to any space. Envisioned to fit the HANDVÄRK dining tables or to complement a spacious hallway.

Designer & Year

Emil Thorup 2019

Type

Bench

Use

Indoor

Country of Production

Lithuania

Pre assembled

No

Materials and Production Process

Frame - TIG welded steel tubes with powder coat finish. Plastic Glides

Top - FSC Plywood with cut flame retardant foam, duck feathers and wadding. Leather upholstery with black fabric backing.

Delivery

2 Packages

Total Gross Weight: 22.3 kg

Total Volume: 0.33 m³

Specifications

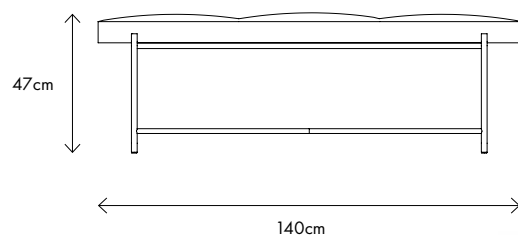
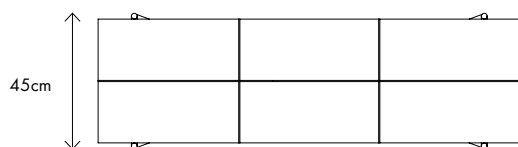
Shade and vegetal leather items always made to order.

Material needed for custom upholstery:

2.5m or 1/2 leather hide

Custom Changes: Upon Request

Warranty: 2 years



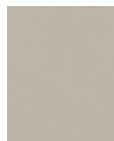
Leather Options



Black

Category 2 Leather

SHADE / Protected Aniline Leather by Sørensens Leather x Norm Architects



Sand
20298



Khaki
20289



Raw Umber
20292



Pitch Black
20296



Ochre
20291

Category 2 Leather

FLUX / By Sørensens Leather



Light Brown
40305

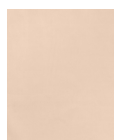


Dark Green
40303



Grey
40301

VEGETAL Leather / by Sørensens Leather

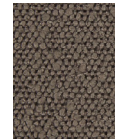


Vegetal

COPENHAGEN by Symphony Mills



Cloud
Copenhagen 901



Soil
Copenhagen 903



Earth
Copenhagen 904

Frame



Black



Stainless Steel



Black/ brass

* Available while stock last

HANDVÄRK
FURNITURE

HANDVÄRK ApS
Aarhusgade 136A Nordhavn Denmark 2150
info@handvark.com | www.handvark.com