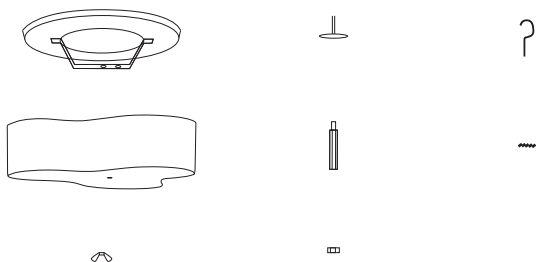


Triple 400 plafondi Tapio Anttila

INNOLUX

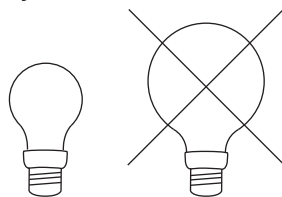
Asennusohje / Installation manual / Bruksansvisning
V.20A_LPR

1x

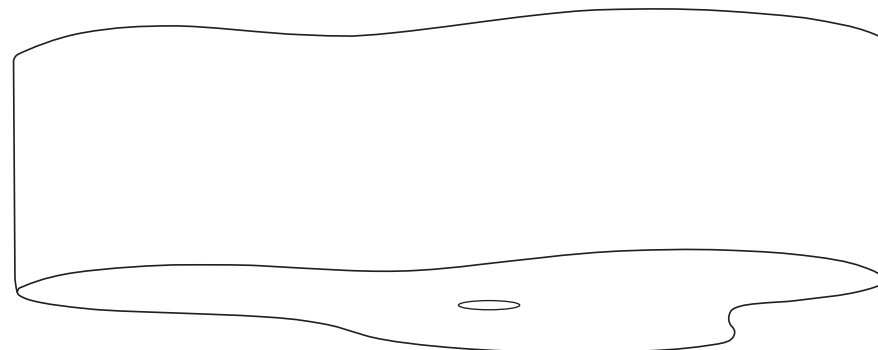


Suositteltu valonlähde / Recommended lightsource
/ Rekommenderade ljuskällan:

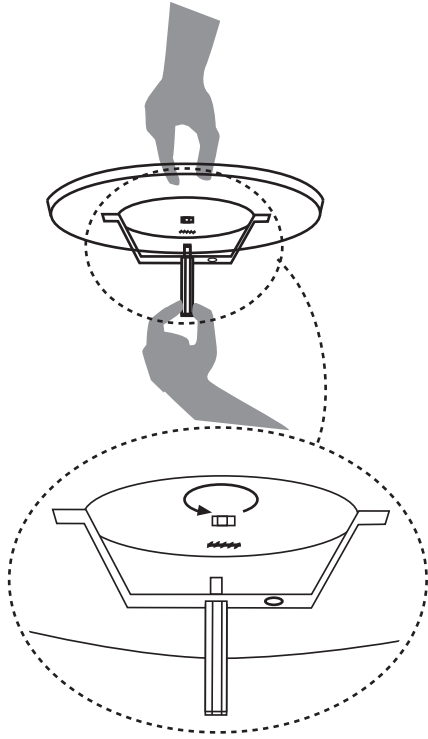
5 - 8W
LED
E27



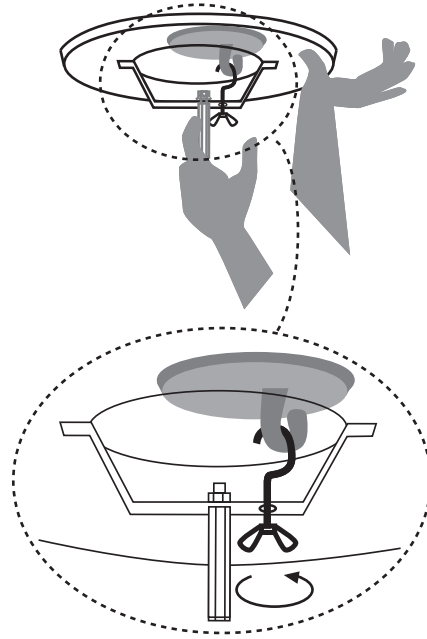
HUOM: Käännä sähköt pois sähkökeskuksesta ennen asennusta.
NOTICE: Switch off the main electricity before installing.
OBS: Vänd av elektricitet från elcenter.



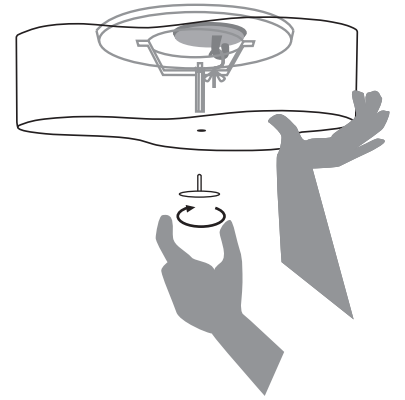
1



2



3



4

