



PRODUCT SHEET

Snaregade Table Collection
by Norm Architects

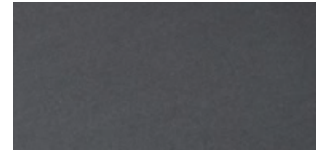
Snaregade Dining Table, Rectangular

BY NORM ARCHITECTS

Rectangular dining table with a tabletop in linoleum or painted oak veneer set on a powder coated steel base.

PRODUCT OPTIONS

TABLETOP



CHARCOAL LINOLEUM



MUSHROOM LINOLEUM



BLACK OAK



LIGHT GREY OAK

POWDER COATED STEEL BASE



BLACK STEEL



LIGHT GREY STEEL

Snaregade Dining Table, Rectangular, Black Steel / Black Oak, by Norm Architects



Snaregade Dining Table, Rectangular

BY NORM ARCHITECTS

TECHNICAL SPECIFICATIONS

PRODUCT TYPE
Dining table

ENVIRONMENT
Indoor

DIMENSIONS

H: 73 cm / 28,7"
D: 90 cm / 35,4"
L: 200 cm / 78,7"

PRODUCTION PROCESS

The tabletop is made from painted oak veneer or forbo linoleum glued on MDF, CNC machine-cut and painted to match the linoleum. The frame is welded together from steel tubes and surface finished with powder coating.

COLOUR

Base
Black (RAL 9005)
Light grey (RAL 9002)

Linoleum tabletop

Charcoal (Forbo) S 8502-B
Mushroom (Forbo) S 2002-Y

Wooden tabletop

Black (RAL 9005)
Light grey (RAL 9002)

GLOSS

Gloss 10-20

MATERIALS

Linoleum or painted oak veneer on MDF and powder coated steel.

WEIGHT

50,8 kg / 112 lb

TEST

EN 15372:2016, L2

CERTIFICATIONS

TSCA title VI compliant

PACKAGING TYPE

Brown box

PACKAGING MEASUREMENTS (H x W x D)

19 cm x 205,5 cm x 96 cm / 7,5" x 80,1" x 37,8"

COLLI

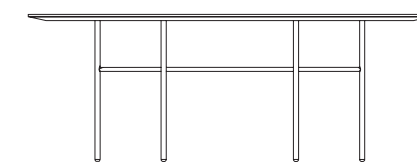
1

MATERIALS & MAINTENANCE

Please visit [menuspace.com](https://www.menuspace.com) for materials and care and maintenance instructions.



D: 95 cm / 37,4"



L: 200 cm / 78,7"

H: 74 cm / 29,1"

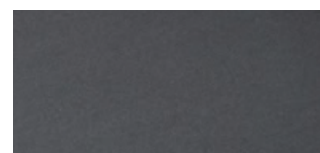
Snaregade Dining Table, Oval

BY NORM ARCHITECTS

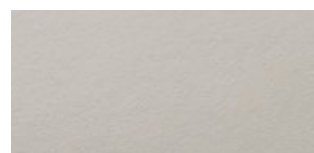
Oval dining table, with a tabletop in linoleum, painted oak veneer or soap treated solid wood set on a powder coated steel base.

PRODUCT OPTIONS

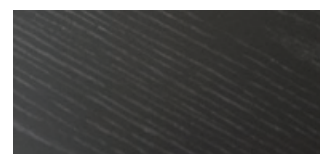
TABLETOP



CHARCOAL LINOLEUM



MUSHROOM LINOLEUM



BLACK OAK



LIGHT GREY OAK

POWDER COATED STEEL BASE



BLACK STEEL



LIGHT GREY STEEL

Harbour Dining Chair, Steel Base, Black/Dakar 0311, by Norm Architects
Snaregade Dining Table, Oval, Black/Charcoal Linoleum, by Norm Architects
Cyclades Vase, Large, Sand, by Nick Ross
Échasse Bowl, Small, Smoke/Brushed Brass, by Theresa Rand
New Norm Dinnerware, Dark Glazed, by Norm Architects
Stackable Glasses, by Norm Architects
Bottle
Carafe, 1 L, Clear Glass/Brass, by Norm Architects

Snaregade Dining Table, Oval

BY NORM ARCHITECTS

TECHNICAL SPECIFICATIONS

PRODUCT TYPE

Dining table

ENVIRONMENT

Indoor

DIMENSIONS

H: 73 cm / 28,7"

D: 95 cm / 37,4"

L: 210 cm / 82,7"

PRODUCTION PROCESS

The tabletop is made from painted oak veneer or forbo linoleum glued on MDF, CNC machine-cut and painted to match the linoleum. The frame is welded together from steel tubes and surface finished with powder coating.

COLOUR

Base

Black (RAL 9005)

Light grey (RAL 9002)

Linoleum tabletop

Charcoal (Forbo) S 8502-B

Mushroom (Forbo) S 2002-Y

Wooden tabletop

Black (RAL 9005)

Light grey (RAL 9002)

GLOSS

Gloss 10-20

MATERIALS

Linoleum, painted oak veneer on MDF and powder coated steel.

WEIGHT

38,8 kg / 85,6 lb

TEST

N / A

CERTIFICATIONS

TSCA title VI compliant

PACKAGING TYPE

Brown box

PACKAGING MEASUREMENT (H x W x D)

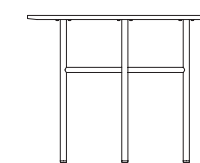
19 cm x 210 cm x 95 cm / 7,5" x 82,7" x 37,4"

COLLI

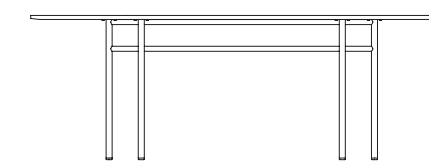
1

MATERIALS & MAINTENANCE

Please visit [menuspace.com](https://www.menuspace.com) for materials and care and maintenance instructions.



D: 95 cm / 37,4"



L: 210 cm / 82,7"

H: 74 cm / 29,1"

Snaregade Dining Table, Ø120

BY NORM ARCHITECTS

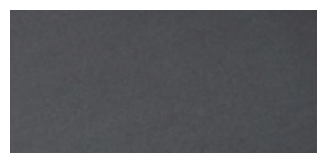
Round dining table with a tabletop in linoleum or painted oak veneer set on a powder coated steel base.

Synnes Chair, Natural Oak, by Falke Svaton
Snaregade Dining Table, Ø138, Black Steel / Black Oak, by Norm Architects
New Norm Dinnerware, Dark Glazed, by Norm Architects
Échasse Bowl, Large, Smoke Glass / Brushed Brass, by Theresa Rand
Échasse Vase, Small, Smoke Glass / Brushed Brass, by Theresa Rand
Gravel Rug, Ivory, by Nina Bruun

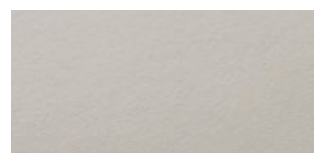


PRODUCT OPTIONS

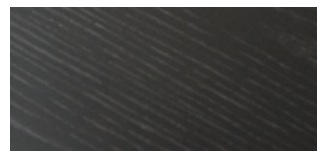
TABLETOP



CHARCOAL LINOLEUM



MUSHROOM LINOLEUM



BLACK OAK



LIGHT GREY OAK

POWDER COATED STEEL BASE



BLACK STEEL



LIGHT GREY STEEL

Snaregade Dining Table, Ø120

BY NORM ARCHITECTS

TECHNICAL SPECIFICATIONS

PRODUCT TYPE

Dining table

ENVIRONMENT

Indoor

DIMENSIONS

H: 73 cm / 28,7"

Ø: 120 cm / 47,2"

PRODUCTION PROCESS

The tabletop is made from painted oak veneer or forbo linoleum glued on MDF, CNC machine-cut and painted to match the linoleum. The frame is welded together from steel tubes and surface finished with powder coating.

COLOUR

Base

Black (RAL 9005)

Light grey (RAL 9002)

Linoleum tabletop

Charcoal (Forbo) S 8502-B

Mushroom (Forbo) S 2002-Y

Wooden tabletop

Black (RAL 9005)

Light grey (RAL 9002)

MATERIALS

Linoleum or painted oak veneer on MDF, and powder coated steel.

GLOSS

Gloss 10-20

WEIGHT

26,9 kg / 59,3 lb

TEST

N / A

CERTIFICATIONS

TSCA title VI compliant

PACKAGING TYPE

Brown box

PACKAGING MEASUREMENTS (H x W x D)

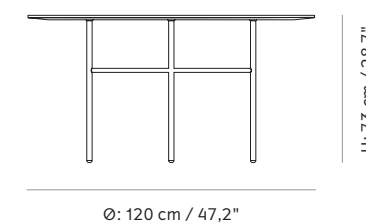
19 cm x 127 cm x 127 cm / 7,5" x 50" x 50"

COLLI

1

MATERIALS & MAINTENANCE

Please visit [menuspace.com](https://www.menuspace.com) for materials and care and maintenance instructions.



Ø: 120 cm / 47,2"

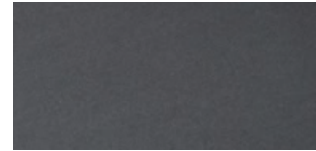
Snaregade Dining Table, Ø138

BY NORM ARCHITECTS

Round dining table with a tabletop in linoleum or painted oak veneer set on a powder coated steel base.

PRODUCT OPTIONS

TABLETOP



CHARCOAL LINOLEUM



MUSHROOM LINOLEUM



BLACK OAK



LIGHT GREY OAK

POWDER COATED STEEL BASE



BLACK STEEL



LIGHT GREY STEEL

Snaregade Dining Table, Ø138, Black Steel / Black Oak, by Norm Architects
Synnes Dining Chair, Black Ash / Dakar Leather 0842, by Falke Svaton



Snaregade Dining Table, Ø138

BY NORM ARCHITECTS

TECHNICAL SPECIFICATIONS

PRODUCT TYPE
Dining table

ENVIRONMENT
Indoor

DIMENSIONS

H: 73 cm / 28,7"
Ø: 138 cm / 54,3"

PRODUCTION PROCESS

The tabletop is made from painted oak veneer or forbo linoleum glued on MDF, CNC machine-cut and painted to match the linoleum. The frame is welded together from steel tubes and surface finished with powder coating.

COLOUR

Base
Black (RAL 9005)
Light grey (RAL 9002)

Linoleum tabletop

Charcoal (Forbo) S 8502-B
Mushroom (Forbo) S 2002-Y

Wooden tabletop

Black (RAL 9005)
Light grey (RAL 9002)

MATERIALS

Linoleum or painted oak veneer on MDF, and powder coated steel.

GLOSS

Gloss 10-20

WEIGHT

30,9 kg / 68,1 lb

TEST
N / A

CERTIFICATIONS
TSCA title VI compliant

PACKAGING TYPE

Brown box

PACKAGING MEASUREMENTS (H x W x D)

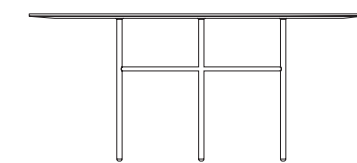
19 cm x 140 cm x 140 cm / 7,5" x 55,1" x 55,1"

COLLI

1

MATERIALS & MAINTENANCE

Please visit [menuspace.com](https://www.menuspace.com) for materials and care and maintenance instructions.



Ø: 138 cm / 54,3"

H: 73 cm / 28,7"

Snaregade Counter Table

BY NORM ARCHITECTS

Rectangular counter table, with a tabletop in linoleum or painted oak veneer set on a powder coated steel base.

PRODUCT OPTIONS

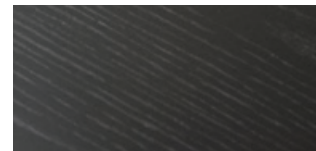
TABLETOP



CHARCOAL LINOLEUM



MUSHROOM LINOLEUM



BLACK OAK



LIGHT GREY OAK

POWDER COATED STEEL BASE



BLACK STEEL



LIGHT GREY STEEL



Snaregade Counter Table, Black Steel / Charcoal Linoleum, by Norm Architects

Snaregade Counter Table

BY NORM ARCHITECTS

TECHNICAL SPECIFICATIONS

PRODUCT TYPE
Counter table

ENVIRONMENT
Indoor

DIMENSIONS
H: 92,7 cm / 36,5"
D: 90 cm / 35,4"
W: 200 cm / 78,7"

PRODUCTION PROCESS
The tabletop is made from painted oak veneer or forbo linoleum glued on MDF, CNC machine-cut and painted to match the linoleum. The frame is welded together from steel tubes and surface finished with powder coating.

COLOUR
Base
Black (RAL 9005)
Light grey (RAL 9002)

Linoleum tabletop
Charcoal (Forbo) S 8502-B
Mushroom (Forbo) S 2002-Y

Wooden tabletop
Black (RAL 9005)
Light grey (RAL 9002)

MATERIALS
Linoleum or painted oak veneer on MDF, and powder coated steel.

GLOSS
Gloss 10-20

WEIGHT
59 kg / 130,2 lb

TEST
EN 15372:2016, L2

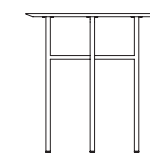
CERTIFICATIONS
TSCA title VI compliant

PACKAGING TYPE
Brown box

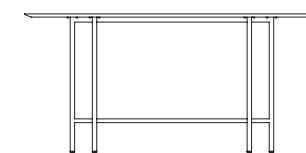
PACKAGING MEASUREMENTS (H x W x D)
30 cm x 96,5 cm x 206,5 / 11,8" x 38" x 81,3"

COLLI
1

MATERIALS & MAINTENANCE
Please visit menospace.com for materials and care and maintenance instructions.



D: 90 cm / 35,4"



W: 200 cm / 78,7"



H: 92,7 cm / 36,5"

Snaregade Bar Table

BY NORM ARCHITECTS

Rectangular bar table with a tabletop in linoleum or painted oak veneer set on a powder coated steel frame.

PRODUCT OPTIONS

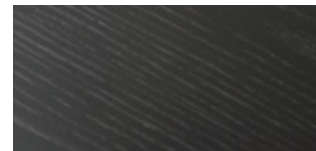
TABLETOP



CHARCOAL LINOLEUM



MUSHROOM LINOLEUM



BLACK OAK



LIGHT GREY OAK

POWDER COATED STEEL BASE



BLACK STEEL



LIGHT GREY STEEL

Snaregade Bar Table, Light Grey Oak / Light Grey Oak, by Norm Architects
Afternoon Counter Chair, Black Steel / Gaja C2C 61115, by Afternoon



Snaregade Bar Table

BY NORM ARCHITECTS

TECHNICAL SPECIFICATIONS

PRODUCT TYPE
Bar table

ENVIRONMENT
Indoor

DIMENSIONS
H: 102,7 cm / 40,4"
D: 90 cm / 35,4"
W: 200 cm / 78,7"

PRODUCTION PROCESS
The tabletop is made from painted oak veneer or forbo linoleum glued on MDF, CNC machine-cut and painted to match the linoleum. The frame is welded together from steel tubes and surface finished with powder coating.

COLOUR
Base
Black (RAL 9005)
Light grey (RAL 9002)

Linoleum tabletop
Charcoal (Forbo) S 8502-B
Mushroom (Forbo) S 2002-Y

Wooden tabletop
Black (RAL 9005)
Light grey (RAL 9002)

MATERIALS
Linoleum or painted oak veneer on MDF, and powder coated steel.

GLOSS
Gloss 10-20

WEIGHT
62 kg / 136,7 lb

TEST
EN 15372:2016, L2

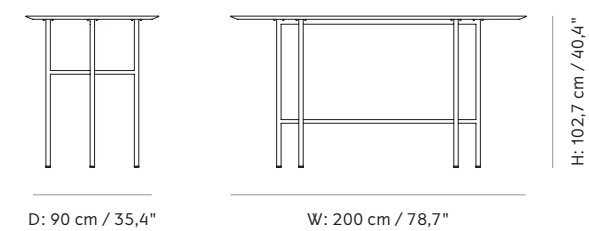
CERTIFICATIONS
TSCA title VI compliant

PACKAGING TYPE
Brown box

PACKAGING MEASUREMENTS (H x W x D)
30 cm x 96,5 cm x 206,5 / 11,8" x 38" x 81,3"

COLLI
1

MATERIALS & MAINTENANCE
Please visit [menuspace.com](https://www.menuspace.com) for materials and care and maintenance instructions.



Snaregade Tabletop, Connector Fitting Set

BY NORM ARCHITECTS

Snaregade Table connectors for bar and counter versions are easy to install to join tables together. Ideal for retrofitting office furniture with a team-oriented environment in mind or extending communal spaces for special events.

Snaregade Tabletop, Connector Fitting Set

BY NORM ARCHITECTS

TECHNICAL SPECIFICATIONS

PRODUCT TYPE
Connector

ENVIRONMENT
Indoor

DIMENSIONS

H: 0,2 cm / 0,08"
W: 30 cm / 11,8"
D: 5,5 cm / 2,2"

PRODUCTION PROCESS
CNC-cut steel plate.

COLOUR
Black (RAL 9005)

GLOSS
Gloss 10-20

MATERIALS
Powder coated steel

WEIGHT
0,47 Kg / 1 lb

TEST
N / A

CERTIFICATIONS
N / A

PACKAGING TYPE
Brown box

PACKAGING MEASUREMENTS (H x W x D)
1 cm x 35 cm x 8 cm / 0,42 x 13,8" x 3,1"

COLLI
1

MATERIALS & MAINTENANCE
Please visit [menuspace.com](https://www.menuspace.com) for materials and care and maintenance instructions.