



GAZZDA

Fina Bed

Product sheet

design by
Mustafa Čohadžić



Fina Bed

Product facts

Materials

Frame	Solid oak
Finish	Hardwax oil
Legs	Powder-coated steel
Headboard	Leather or fabric upholstery

Technical features

Body

The superlight, demountable Fina Bed's body structure is made out of solid wood - oak. The most noticeable feature of the bed is a thin frame which can be assembled in a few minutes.

Headboard

Soft upholstery covers the front side of the headboard, while the backside reveals its oak veneered (rift cut) structure. The headboard is available in two upholstery materials: leather and fabric. For further information please see Available materials page in this document.

Legs

Bed and headboard legs are made out of powder coated-steel (fine structure) and are available in mushroom matte or black matte color.

Finish

Solid wood finish is available in two plant-based Hardwax oil finishes (colours), which retain the wood's natural state, as a white or natural oil.

Cleaning

Please see [Product](#) or [Material](#) page on our website.

Standards and certifications

Internal frame dimensions of the Fina Bed (European sizes) are in accordance with European Standard DIN EN 1334 (internal frame width = mattress nomenclature width + 0,5 cm; internal frame depth = mattress nomenclature depth + 0 cm).

Mattresses and slats

Mattress is not included in the Fina Bed.

Basic slats are included in the Fina Bed. They come in two separate parts and are combined together in one bed frame (dimensions of each part is 1/2 bed internal frame width).

Notes to consider

Variations

Natural variations in wood color and surface may occur. Regular maintenance will ensure the wood preserves its authentic beauty and can last for generations.

Product changes

Please note that Gazzda reserves the right to alter construction and design without notice.

Dimensions (tolerances)

The dimensions shown are indicative, they may vary due to the natural properties of wood, season, or manufacturing processes. Deviations from the specified size may occur, usually no more than 1 cm.

For all additional inquiries regarding the Fina Bed please feel free to [contact us](#).

Fina Bed 140 x 200

Frame Solid oak, Headboard Upholstered, Legs Powder-coated steel

Version: 1-1-2023

Basic info

Design Mustafa Čohadžić

Mattress size W: 140, D: 200

Product size W: 160, D: 220, H: 92

Packaging W: 237, D: 62, H: 22

Volume 0,32 m³

Net weight 47 kg

Gross weight 55 kg

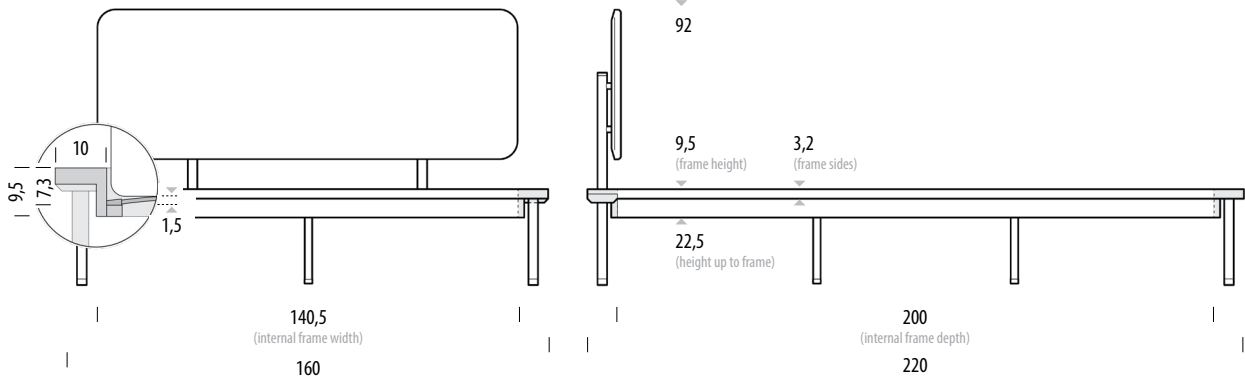


Item no. 1A5

Internal space	Width	Depth	Height
Frame size	140,5	200	7,3
Mattress size	140	200	

Assembly 20 min / 2 persons

Frame	Height
Up to frame	22,5
Total frame	9,5
Visible frame	3,2



Fina Bed 160 x 200

Frame Solid oak, Headboard Upholstered, Legs Powder-coated steel

Version: 1-1-2023

Basic info

Design	Mustafa Čohadžić
Mattress size	W: 160, D: 200
Product size	W: 180, D: 220, H: 92
Packaging	W: 237, D: 62, H: 22
Volume	0,32 m ³
Net weight	54 kg
Gross weight	62 kg

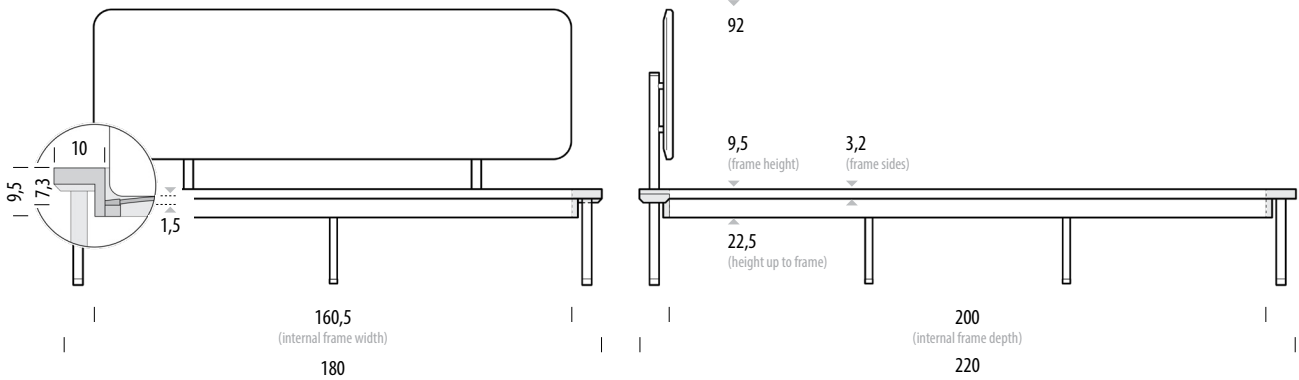


Item no. 1E1

Internal space	Width	Depth	Height
Frame size	160,5	200	7,3
Mattress size	160	200	

Assembly 20 min / 2 persons

Frame	Height
Up to frame	22,5
Total frame	9,5
Visible frame	3,2



Fina Bed 180 x 200

Frame Solid oak, Headboard Upholstered, Legs Powder-coated steel

Version: 1-1-2023

Basic info

Design	Mustafa Čohadžić
Mattress size	W: 180, D: 200
Product size	W: 200, D: 220, H: 92
Packaging	W: 237, D: 62, H: 22
Volume	0,32 m ³
Net weight	60 kg
Gross weight	68 kg

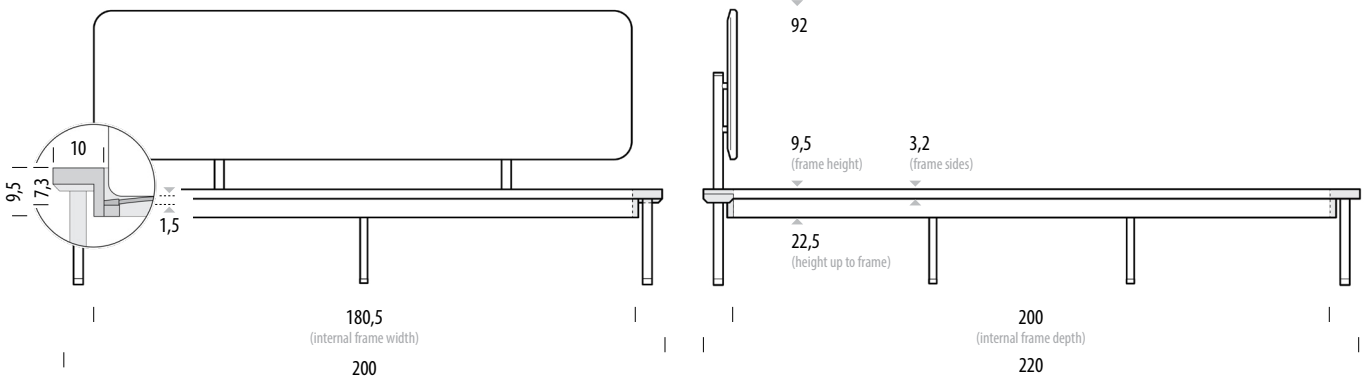


Item no. 1E2

Internal space	Width	Depth	Height
Frame size	180,5	200	7,3
Mattress size	180	200	

Assembly 20 min / 2 persons

Frame	Height
Up to frame	22,5
Total frame	9,5
Visible frame	3,2



Fina Bed

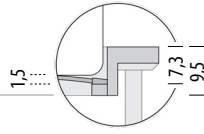
Possible mattresses and slats combinations

0cm 20 50 100 150 200 250

Scale: 1:40

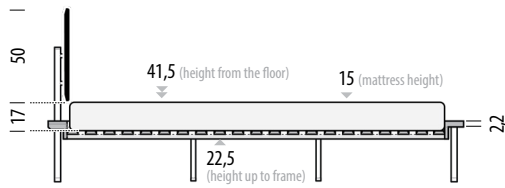
Version: 1-1-2023

Fina bed Frame height 9,5 cm

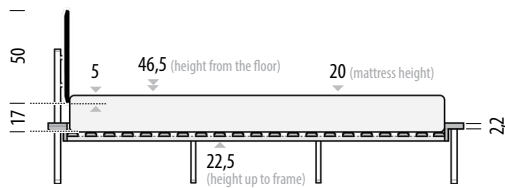


Basic slats included

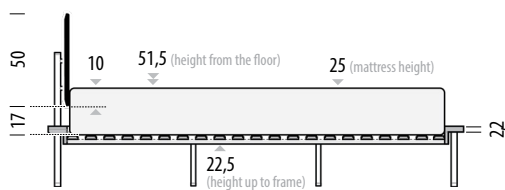
A basic solid (not sprung) slatted base is included in the Fina bed.
Mattress not included.



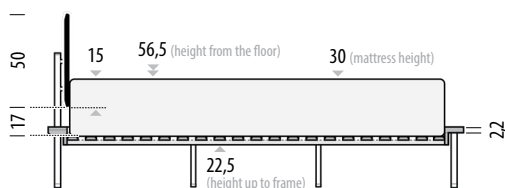
Mattress height	15
Frame height	3
Slats height	1,5



Mattress height	20
Frame height	3
Slats height	1,5



Mattress height	25
Frame height	3
Slats height	1,5



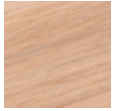
Mattress height	30
Frame height	3
Slats height	1,5

Fina Bed

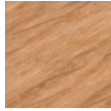
Available materials

Version: 1-1-2023

Frame | Solid oak



Oiled
1015
White oil



Oiled
1505
Natural oil

Legs | Powder-coated steel



Mushroom
RAL 1013



Black
RAL 9005

Headboard | Leather upholstery

Dakar - by Leder Reinhard



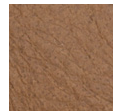
0500
Black



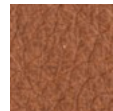
1258
Grey



1436
Stone



3411
Nature

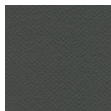


2732
Whisky

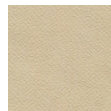
Deca vegan leather - by Camira



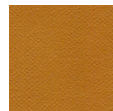
DEC20
Downing



DEC05
Decimal



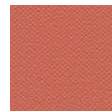
DEC03
Digit



DEC07
Decapod



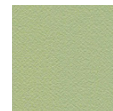
DEC14
Fortune



DEC09
Tien



DEC11
Richter



DEC15
Catenia

Headboard | Fabric upholstery

Facet felt - by Textaafoam



1003
Zwart



1001
Middengrijs



74
Aubergine



24
Yellow



41
Light Blue



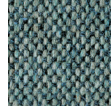
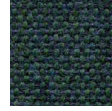
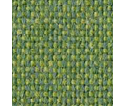
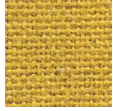
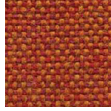
56
Petrol

Fina Bed

Available materials

Version: 1-1-2023

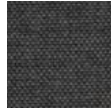
Main line flax - by Camira

MLF16
TempleMLF20
UpminsterMLF02
ArchwayMLF10
NewburyMLF24
BayswaterMLF22
WestminsterMLF32
GreenfordMLF18
TufnellMLF17
TootingMLF13
Leyton

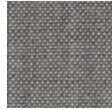
Remix - by Kvadrat



0753



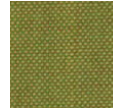
0163



0123



0823



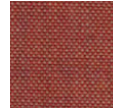
0912



0933



0612

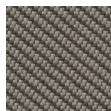
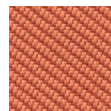


0632

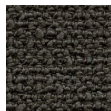
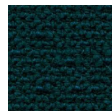
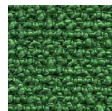
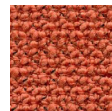
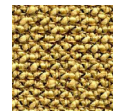


0762

Oceanic - by Camira

OOC01
FlotsamOOC08
BayOOC14
RiptideOOC13
PaddleOOC11
NeptuneOOC05
CoralOOC07
Barrier

Yoredale - by Camira

UDA08
GayleUDA25
LeyburnUDA17
RibbleUDA10
CrayUDA04
HardrawUDA02
KidstoneUDA03
AskriggUDA05
Simonstone

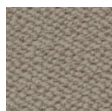
Vidar - by Kvadrat



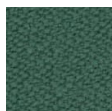
0182



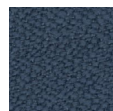
0133



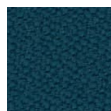
0222



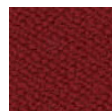
0943



0733



0872



0582



0472