

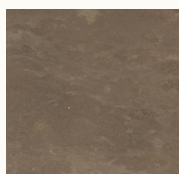
Lily Side Table, H 25 cm

Coffee shell or wood waste mixed
with post-consumer e-waste

The Lily Table, designed by OEO Studio, is made with a black frame of 20% recycled steel and tabletop in Matek®. Innovative technology allows us to recycle fibre-based waste materials with recycled plastic waste in the Matek® material. The Lily Tables are available in several Matek blends and sizes (diameter and height), which makes them exceptionally suitable to arrange in groups of two or more. The collection is created with a simple knock-down frame for flat packing and easy assembly at home.



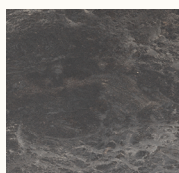
Wood Waste Grey



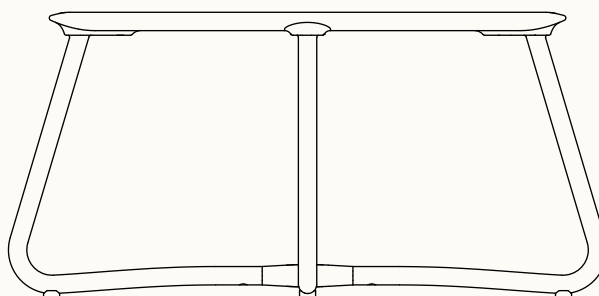
Coffee Waste Dark



Coffee Waste Light



Coffee Waste Black



Designed by

OEO Studio

Item no.

23001 Lily Side Table H 25 cm
– Wood Waste Grey*
23002 Lily Side Table H 25 cm
– Coffee Waste Light*
23003 Lily Side Table H 25 cm
– Coffee Waste Dark*
23004 Lily Side Table H 25 cm
– Coffee Waste Black*

**Variation possible due to recycled materials*

Country of origin
Latvia

Materials

Coffee shell waste from BKI's coffee roasting process or wood waste mixed with post-consumer e-waste.

Base

20% recycled steel, black finish

Test

EN 15372:2016 Test: L2

Dimensions

Base: W 52 cm x D 52 cm x H 25 cm
/ W 20.5" x D 20.5" x H 9.8"

Tabletop: Ø 45 cm / Ø 17.7"

Weight

5,1 kg / 11.2 lbs

Packaging 1 box / 1 pcs.

Maintenance

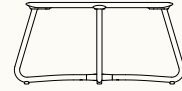
Please follow our material cleaning and care guide [here](#)

Environment

Indoor

Mater Sustainability Factsheet

Lily Side Table,
H 25 cm



Made of

Matek® and partly recycled steel

Item no. 23001
Wood Waste Grey

CO₂ Footprint
23 kg CO₂e

= 2320g
of waste materials

Item no. 23002
Coffee Waste Light

CO₂ Footprint
23 kg CO₂e

= 2320g
of waste materials

Item no. 23003
Coffee Waste Dark

CO₂ Footprint
23 kg CO₂e

= 2320g
of waste materials

Item no. 23004
Coffee Waste Black

CO₂ Footprint
23 kg CO₂e

= 2320g
of waste materials

*calculated using Målbar Software V. 2.9608 on the 30.10.23

Mater Sustainability Factsheet

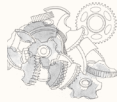
Matek™



Matek®

In alliance with large corporations, Mater explores new technology that recycles industrial fibre and plastic waste. This results in five new unique patented materials under the name Matek®.

Read more about Matek [here](#)



Steel

Our Steel is composed of 20% recycled steel. Steel is a strong and light material with the quality that it can be processed in unlimited ways.



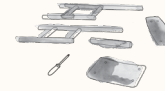
CO₂ Footprint

At Mater, we believe in the importance of transparency. By doing Life Cycle Assessments (LCA) on our furniture, we can analyse the total climate emission for each of our product's lifespan.

Mater Take-Back

We unhesitatingly offer to take all our furniture made from Matek® back at the end of its life to recycle it into new furniture.

Read more about how Mater Take-Back works [here](#)



Repair for long lasting

Good products, are made to be used. To give the products the longest possible life, we want to make it easy for you to repair them yourself.

Contact our customer service for more info [here](#)



Green energy

This product is produced in a production facility that is 100% powered by hydropower – a renewable energy resource.